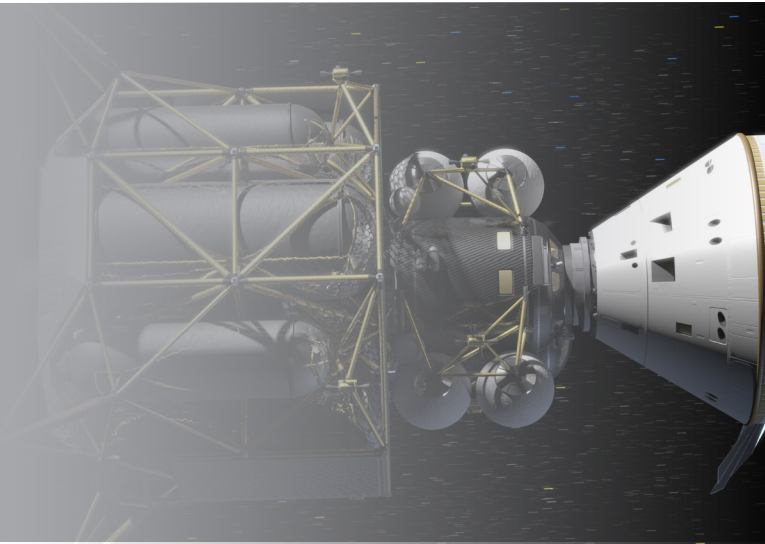


ALTAIR Telemetry Systems

Integrated Systems



Portable, Rackmount, or Rugged Computer Chassis / Bald Eagle RF/ Tarsus3-cPCI or PCIe / Display & Post Analysis Software

ULYSSIX 
TECHNOLOGIES, INC.

Where Technology Soars
A Woman-Owned Small Business
www.ulyssix.com

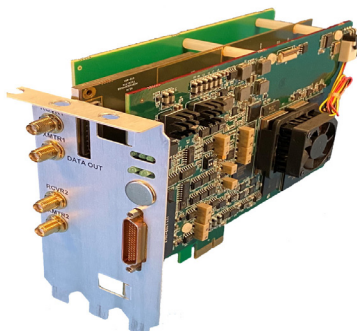
ALTAIR Telemetry Systems

The ALTAIR Telemetry System is an Ulyssix integrated system fully customizable to meet your needs. Offering single or multiple channels, the ALTAIR can be built to support RF, PCM Processing, Data Acquisition, Graphical Real-Time Displays, and Post Analysis software processing with network interfacing.

Rugged
Rackmount
or Portable
Computer
Chassis



Bald
Eagle RF-
PCIe/cPCI
RF to Bits



Portable or Rackmount Chassis

ALTAIR Systems can be configured into a rugged portable computer or into higher telemetry stream capacity rackmount computers. This offers a wide variety of solutions for size and total number of channels to fit any telemetry application.

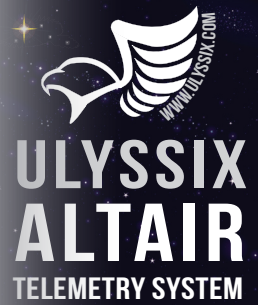
Depending on the chassis chosen, the interconnect pigtail cabling can be mounted to the rear panel of the computer, to a custom bulk head mounting plate, or connections through the standard Ulyssix supplied pigtail cables.

Bald Eagle RF Receiver

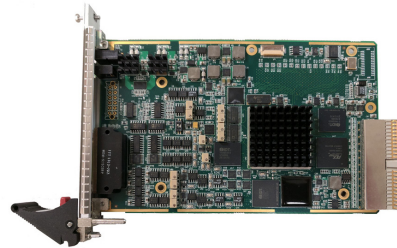
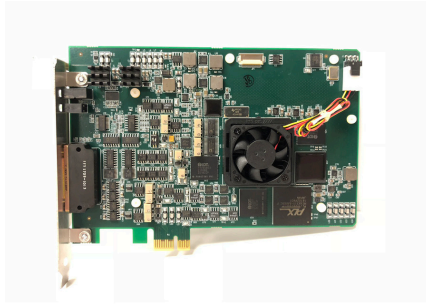
The Ulyssix family of RF cards are DSP implemented multi-mode receivers. The multi-mode Bald Eagle RF's unique approach can receive and demodulate C/S/L/P Band modulated data. The Bald Eagle RF is a daughter card to the Tarsus3-PCIe/cPCI PCM processing card and together gives a complete RF to Bit Solution.

ALTAIR Telemetry Systems

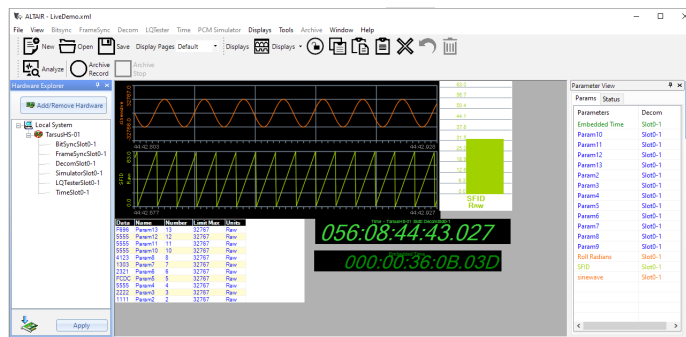
Each ALTAIR system comes fully integrated with user customized hardware and software solutions to exactly fit the customer's requirements. All Ulyssix products come with the Ulyssix ALTAIR Software Suite for no charge. The DEWESoft Software Suite is available for an additional cost.



Tarsus3- PCIe/cPCI



ALTAIR Setup & Display Software



Ulyssix Tarsus3 cPCI/PCIe

The Tarsus3-cPCI is a Ulyssix 3rd Generation 3U cPCI/PCM Processor card 40 Mbps Bit Sync, Frame Sync, Decom, IRIG Time Code Reader, and PCM simulator with ALTAIR PCM Software Application. Includes a Standard 9" MDM51 pigtail cable with 8 differential and 17 BNC connectors.

The Tarsus3 series is also available with Dual Bit Sync and Dual Frame Sync.

Custom Cables are available upon request. Contact Ulyssix for quotes.

ALTAIR Software Suite

The Ulyssix ALTAIR Software Suite is designed to work with any of the Ulyssix family products in a Windows based environment. The ALTAIR Software Suite is ideal for a Real-Time Checkout application. With self built widgets, no compiling is necessary when creating new displays. ALTAIR has full frame archiving capability through the utilization of Ulyssix hardware and can archive the raw frame dump data to a designated hard drive. This archived data can then be played back using the Bald Eagle™ or Tarsus3™ archive simulator for further processing.

Included in the software suite is the Ulyssix FlashBurn, a Field Programmable Gate Array (FPGA) programming tool. This allows the user to update the onboard firmware without sending the hardware back to the factory. Easy to follow setups, self diagnostic tools, and various adaptable displays are just a few attributes that set the ALTAIR Software Suite apart from the rest.

Integrated Data Acquisition



ACME DuraPAC PCIe

Portable PCIe computer system featuring:

- 4 PCIe expansion slots
- Capacity for two Tarsus3-PCIe cards or one BaldEagle RF
- Monitor resolution 1920 x 1080
- 17 inch display



FlexPAC PCIe or PCI/PCIe

Portable PCI/PCIe computer system featuring:

- 7 PCIe Slots
- Up to three Tarsus3-PCIe cards or BaldEagle RF
- 17 inch display

FlexPAC III

Portable 3 monitor PCIe computer system featuring:

- 7 PCIe slots
- Up to three Tarsus3 PCIe cards or one BaldEagle RF
- Three 17 inch displays

Additional Chassis Options

Marvin Test Solutions

GX7300, GX7800

19 slot 3U cPCI chassis, 4U
19 inch rackmount or desktop
use. Includes cPCI Single Board
Computer



ACME ECP382

7 slot 3U cPCI portable chassis
featuring a 15 inch display



ACP-4000

4U rackmount chassis with up to
7 PCIe and 3 - 1/2 cPCI usable,
expansion slots



ACME KVM Switch

1U Single or DualRail rackmount
KVM Switch. Controls up to 8
systems



Advantech ACP-2000

2U rackmount chassis
with 3 PCI Slots



***Specifications are subject to change without notice.**

Revised: May 10, 2021