



Ulyssix Driver, Firmware, and DeweSoft Installation and Upgrade Manual

Revision E 09/11/18

Ulyssix Technologies, Inc
7470 New Technology Way, Suite B, Frederick, MD 21703-9461
Tel: 301-846-4800 ~ Fax: 301-846-0686 ~ www.ulyssix.com

Table of Contents

Introduction	3
Ulyssix Driver Installation and Upgrade	4
DeweSoft X3 Installation	13
DeweSoft X3 and Addons Upgrade	20
DeweSoft X3 Register Plug-Ins and Import License	24
Ulyssix Firmware Upgrade	27

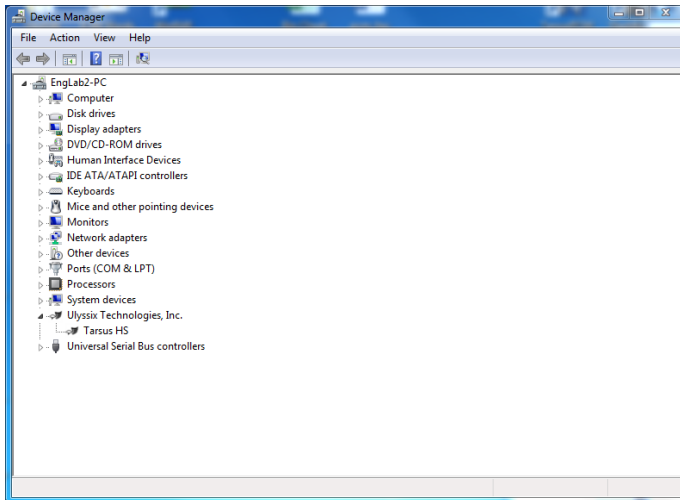
Introduction

This document describes the processes for installing the Ulyssix Driver; installing, upgrading, and configuring DeweSoft X3; and updating the Ulyssix Firmware.

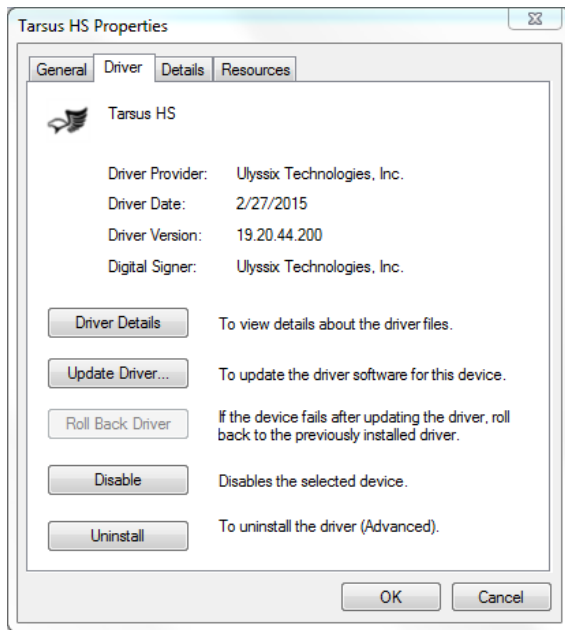
Please note that after the completion of every DeweSoft X3 Installation that the procedure for DeweSoft X3 and Addons Upgrade must be followed. The DeweSoft X3 and Addons Upgrade process adds most recent pcm_hw.dll, Tarsus.dll, TalonRF.dll, and Chapter10.dll files with the implementation of the latest Ulyssix hardware and DeweSoft X3 software features.

Ulyssix Driver Installation and Upgrade

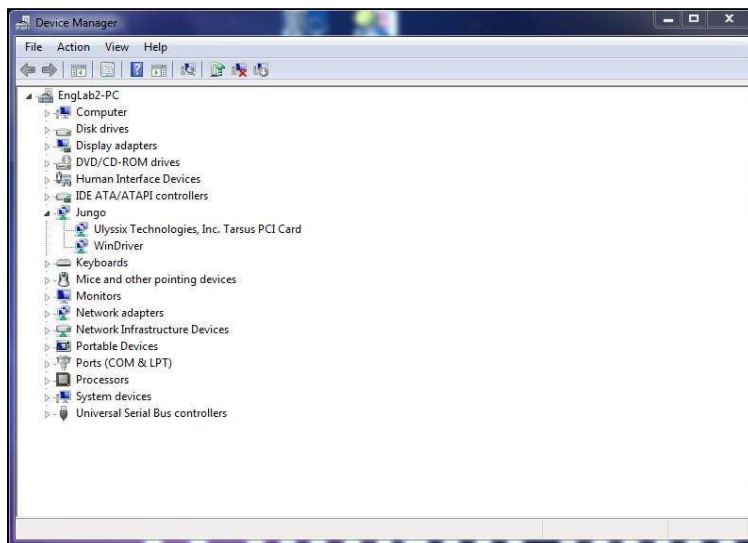
1. Determine which version of the Ulyssix Driver is currently installed on your system. Open the Windows Control Panel and go to Device Manager. Look for the Ulyssix Technologies Inc. heading. If Ulyssix Technologies Inc heading, is not listed, then proceed to Step 2. Otherwise, go to Sub-Step a.



- a. Under the Ulyssix Technologies Inc. heading there will be a listing for each Ulyssix card in the computer.
- b. Right click on a card and select "Properties." In the Properties window, select the "Drivers" tab and look at the Driver Date. The Driver Date should be 02/27/2015 or 05/11/2018. If date does not match, then proceed to Step 3 to upgrade your Ulyssix Driver.
- c. As a note, the 02/27/2015 and 05/11/2018 drivers are very similar and in most cases the driver update from the 02/27/2015 is not needed. Please contact Ulyssix with any questions.
- d. You have completed this section. Please continue to the section about installing DeweSoft X3.



2. Look for the Jungo heading in the Device Manager. If the Jungo heading is listed, then the computer has the old Ulyssix Tarsus-PCI/TarsusHS drivers installed. This driver will need to be uninstalled before the new Ulyssix Driver can be installed. Please follow the Sub-Steps a and b below to remove the Jungo Driver:



- a. Under the Jungo heading, right click on "Ulyssix Technologies Inc., TarsusPCI Card," and then and click "Uninstall." Please check the "Delete the driver software from this device" in the "Confirm Device Uninstall" dialog box and then click "OK."
- b. Repeat the steps above to uninstall the "WinDriver" from the "Jungo" folder. Jungo should no longer appear in the Device Manager.

3. Determine the operating system for your computer. Locate “System Properties” on your PC. System Properties can be accessed by going to the Control Panel and selecting System or by right mouse clicking on “My Computer” and selecting “Properties.” Determine the operating system by looking at the “Windows Edition” section. Look at the “System” section to determine if the operating system is 32-bit or 64-bit.

[View basic information about your computer](#)

Windows edition

Windows 7 Ultimate

Copyright © 2009 Microsoft Corporation. All rights reserved.

Service Pack 1

System

Rating:

3.6 Windows Experience Index

Processor:

Intel(R) Core(TM)2 Quad CPU Q9400 @ 2.66GHz 2.67 GHz

Installed memory (RAM):

4.00 GB

System type:

64-bit Operating System

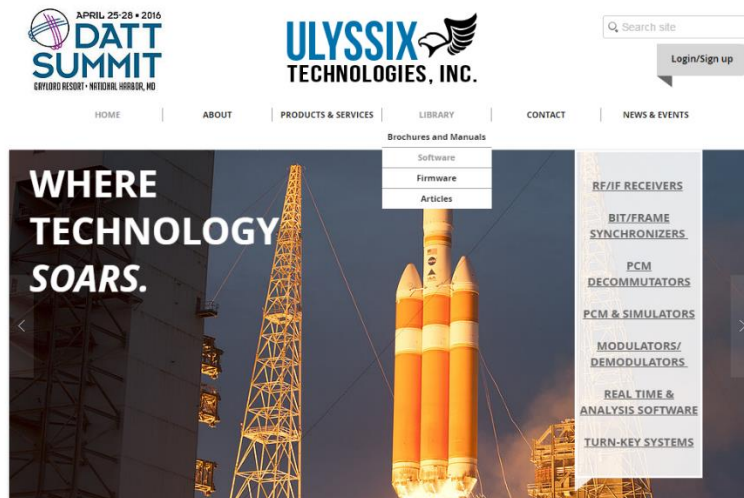
Pen and Touch:

No Pen or Touch Input is available for this Display

4. Acquire the correct Ulyssix Driver. The drivers are available for download on the Ulyssix website at <http://www.ulyssix.com/#!software/cv43> or from your Ulyssix CD.

- a. Using the website:

- i. On the homepage, scroll your mouse over “Library” and then click “Software.”



- ii. Locate “DeweSoft Software Suite” on the webpage.

DEWESoft Software Suite

User friendly software package with real time displays and playback analysis. DEWESoft allows for multiple asynchronous embedded formats, tagged parameters, frame format identifiers and much more.

All Ulyssix telemetry cards are now running in DEWESoft X3 SP3 32-bit and 64-bit:

Download New Installs or Updates ver. Tarsus.dll 11.0.13, pcm_hw.dll 17.14, Chapter10 ver 6.0.1:

[DEWESoft X3 64-bit SP3 Full Install](#) | [DEWESoft X3 64-bit SP3 Updates](#)

Download New Installs or Updates ver. Tarsus.dll 11.0.13, pcm_hw.dll 18.4, Chapter10 ver 6.0.1:

[DEWESoft X3 32-bit SP3 Full Install](#) | [DEWESoft X3 32-bit SP3 Updates](#)

Legacy DEWESoft X2 SP10:

Download New Installs or Updates ver. Tarsus.dll 11.0.13, pcm_hw.dll 18.4, Chapter10 ver 6.0.1:

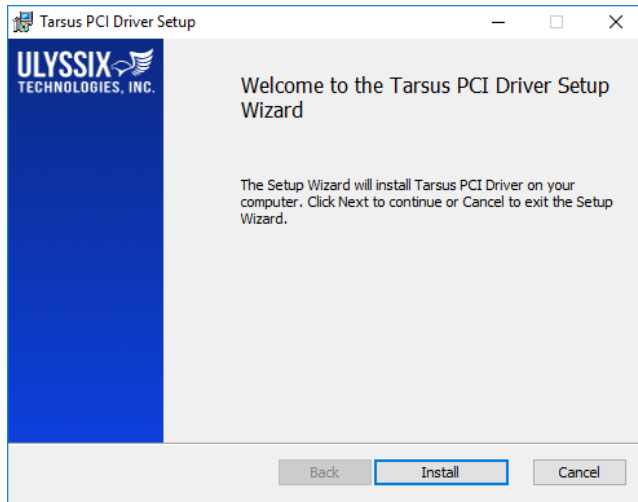
[DEWESoft X2 SP10 Full Install](#) | [DEWESoft X2 SP10 Updates](#)

Driver B Release 02-27-2015

[Win10 64-bit Driver](#) | [Win7 64-bit Driver](#) | [Win7 32-bit Driver](#) | [WinXP Driver](#)

- iii. Download one of the following files below based on your operating system:
 1. For Windows XP, use installer “WinXP Driver.”
 2. For Windows 7 32-bit, use installer “Win7 32-bit Driver.”
 3. For Windows 7 64-bit, use installer “Win7 64-bit Driver.”
 4. For Windows 10 64-bit, use installer “Win10 64-bit Driver.”
 5. For any other Windows operating system, please contact Ulyssix.
- b. Using the Ulyssix Software CD:
 - i. Insert the Software CD into the CDROM.
 - ii. Open the folder “DeweSoft X3”
 - iii. Select the correct driver installer version below based on your operating system:
 1. For Windows XP, use installer “installer_WXP_x86.exe.”
 2. For Windows 7 32-bit, use installer “installer_WIN7_x86.exe.”
 3. For Windows 7 64-bit, use installer “installer_WIN7_x64.exe.”
 4. For Windows 10 64-bit, use installer “installer_WIN10_x64.exe.”
 5. For any other Windows operating system, please contact Ulyssix.
5. Run the driver installer. In Windows 10, the operating system will ask “Do you want to allow this app from an unknown publisher to make changes to your computer? “ Click the Yes button.
6. If this version of the driver is already installed, you will get a form that shows “Repair” or “Remove.” This should only happen if the version on the computer is the same as the version of the installer. Hit cancel to exit the driver installation and continue to the DeweSoft X3 Installation section.
- 7.

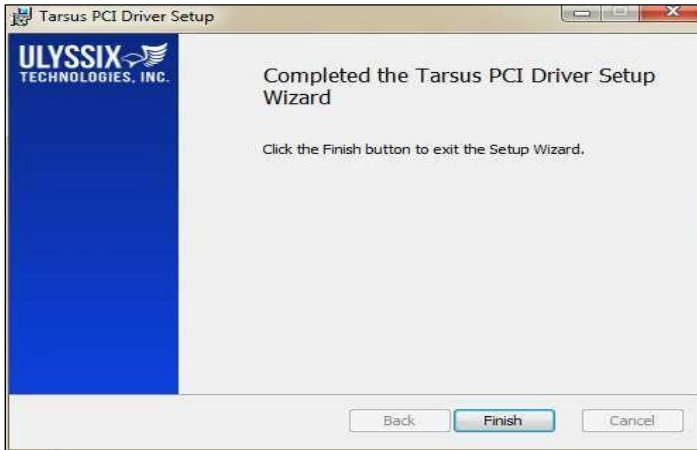
8. The following screen will appear:



9. In the Welcome to the Tarsus PCI Driver Setup window, click the Install button.
10. As the new driver is installing, you may see the following screen. Select "Install this driver software anyway." This is a Windows Security check for new driver installations.

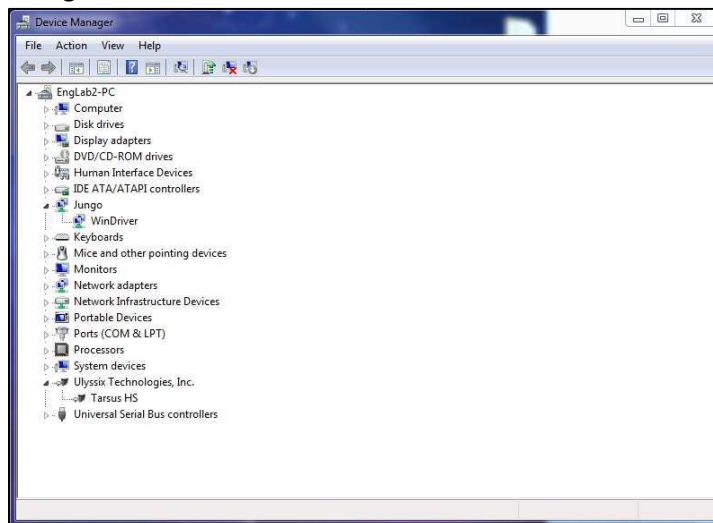


11. When the Tarsus PCI Driver completes, click "Finish."



12. Verify the installation of the new Ulyssix Driver in Device Manager:

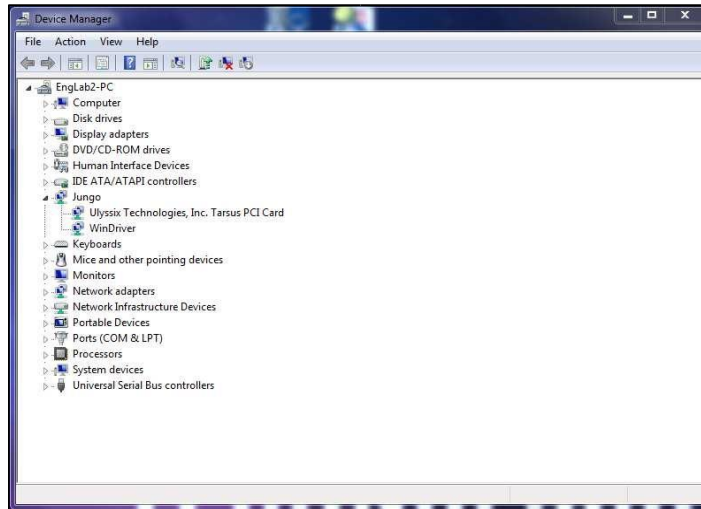
- a. Navigate to the Control Panel and then to the Device Manager.



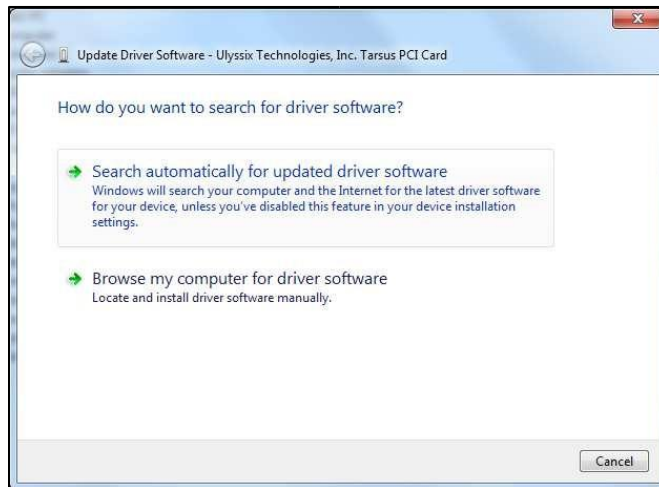
13. If you see a heading for "Ulyssix Technologies, Inc.", expand the heading. There should be a listing for each Ulyssix cards in your system. If these items are present in Device Manager, then your installation is complete. Please restart your computer and the driver will be ready for use. Proceed to the DeweSoft X3 Installation section.

14. If the "Ulyssix Technologies, Inc." heading is not listed in Device Manager, please follow the steps below:

- a. If the Jungo heading is listed in Device manager, highlight the "Ulyssix Technologies Inc. Tarsus PCI Card" entry under "Jungo," right mouse click, and select "Update Driver Software."



b. Select “Browse my computer for driver software.”



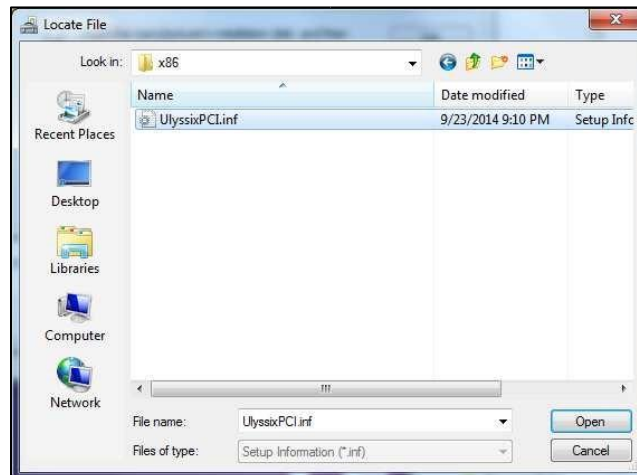
c. Select “Let me pick from a list of device drivers on my computer.”



- d. Select “Have Disk.”



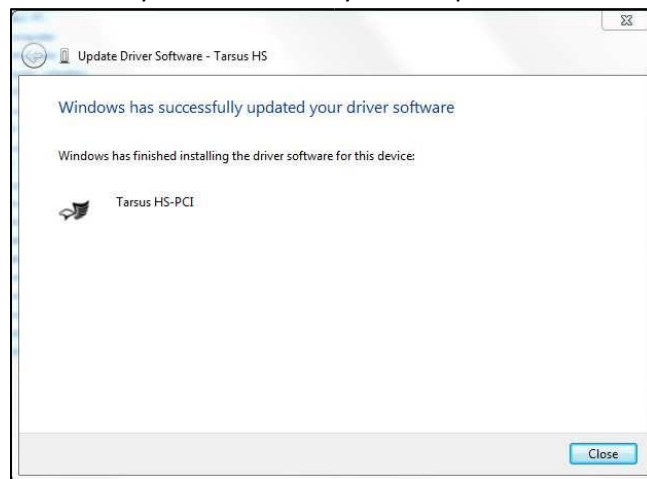
- e. Browse to the following directories for the driver INF file. Please note that Windows 10 drivers are installed in the a directory called “Windows7”:
- For a 32-bit Windows 7 OS, browse to “C:\Program Files\Ulyssix\Driver\Windows7\x86,” select “UlyssixPCI.inf,” and click “Open.”
 - For a 64-bit Windows 7 OS, browse to “C:\Program Files (x86)\Ulyssix\Driver\Windows7\x64,” select “UlyssixPCI.inf,” and click “Open.”



- f. Click “OK” in the “Install from Disk” window.
- g. Click “Next” in the “Update Driver Software” window.



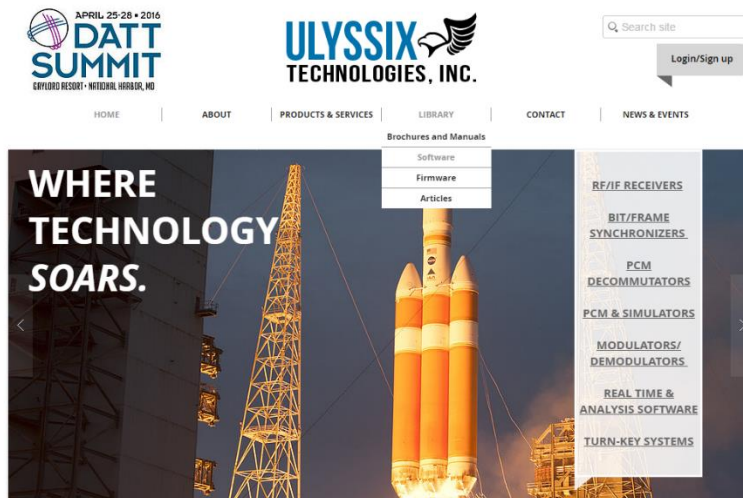
- h. Windows will install the new driver. A window will indicate that the driver was installed successfully. Please restart your computer and it will be ready for use.



DeweSoft X3 Installation

1. Determine if a previous version of DeweSoft X3 is installed on your computer. If DeweSoft X3 is currently installed, then skip to the DeweSoft X3 Upgrade section.
2. Please note that DeweSoft X3 comes in a 32-bit version and 64-bit version. DeweSoft X3 32-bit will install on any Windows 10 or Windows 7 computer that meets the minimum hardware requirements. DeweSoft X3 64-bit requires Windows 10 64-bit or Windows 7 64-bit operating system. Please contact Ulyssix with any questions.
3. Acquire the DeweSoft X3 installer.
 - a. Using the website:

- i. The DeweSoft X3 installer can be downloaded from the Ulyssix website at <http://www.ulyssix.com/#!software/cv43>.



- ii. Navigate to the “DeweSoft Software Suite” section and click the “DeweSoft X3 64-bit Full Install” link or the “DeweSoft X3 32-bit Full Install” link.

DEWESoft Software Suite

User friendly software package with real time displays and playback analysis. DEWESoft allows for multiple asynchronous embedded formats, tagged parameters, frame format identifiers and much more.

All Ulyssix telemetry cards are now running in DEWESoft X3 SP3 32-bit and 64-bit:

Download New Installs or Updates ver. Tarsus.dll 11.0.13, pcm_hw.dll 17.14, Chapter10 ver 6.0.1:

[DEWESoft X3 64-bit SP3 Full Install](#) | [DEWESoft X3 64-bit SP3 Updates](#)

Download New Installs or Updates ver. Tarsus.dll 11.0.13, pcm_hw.dll 18.4, Chapter10 ver 6.0.1:

[DEWESoft X3 32-bit SP3 Full Install](#) | [DEWESoft X3 32-bit SP3 Updates](#)

Legacy DEWESoft X2 SP10:

Download New Installs or Updates ver. Tarsus.dll 11.0.13, pcm_hw.dll 18.4, Chapter10 ver 6.0.1:

[DEWESoft X2 SP10 Full Install](#) | [DEWESoft X2 SP10 Updates](#)

Driver B Release 02-27-2015

[Win10 64-bit Driver](#) | [Win7 64-bit Driver](#) | [Win7 32-bit Driver](#) | [WinXP Driver](#)

- iii. Your web browser will display the following page. Click the “Download” button to save the install file.



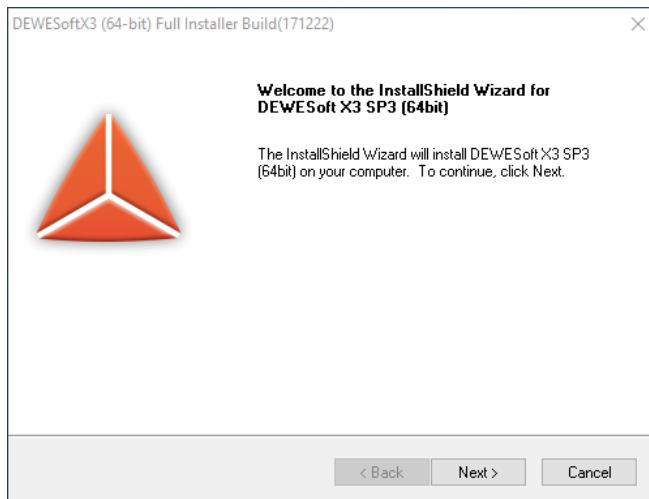
DEWESoft_FULL_X3_SP3_RELEASE_180622_64BIT.exe

Hmm... looks like this file doesn't have a preview we can show you.

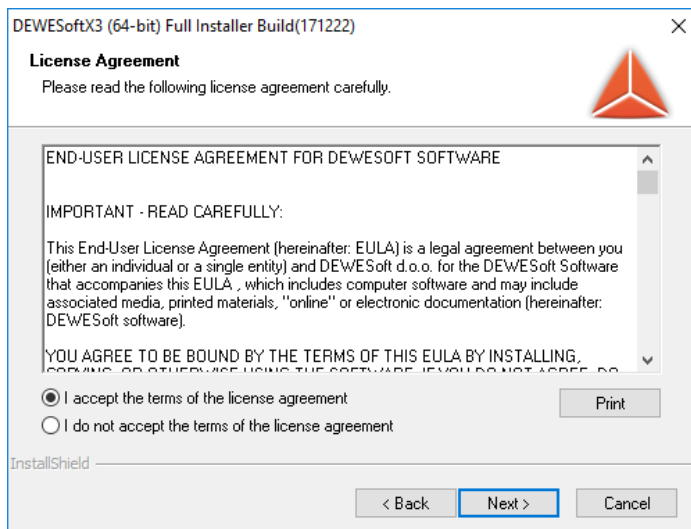
Open

Download

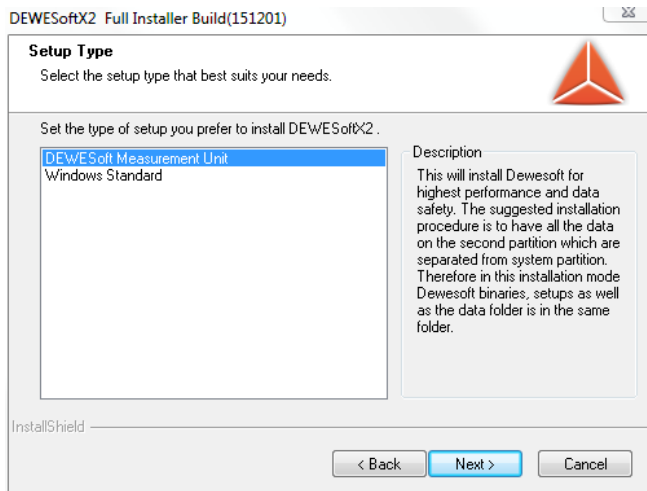
- b. Using the Ulyssix Software CD:
- Insert the Software CD into the CDROM.
 - Open the folder “DeweSoft X3”
 - Inside the DS_FullInstall_SPX, run the file “DEWESoft_FULL_X3_SPX_RELEASE.exe.”
4. Run the DeweSoft X3 executable. If Windows 10 asks “Do you want to allow this app to make changes to your computer?” Click the Yes button.
5. On the DeweSoft X3 Full Installer Welcome screen, click “Next.”



6. Click the radio button to accept the Licence Agreement and click “Next.”

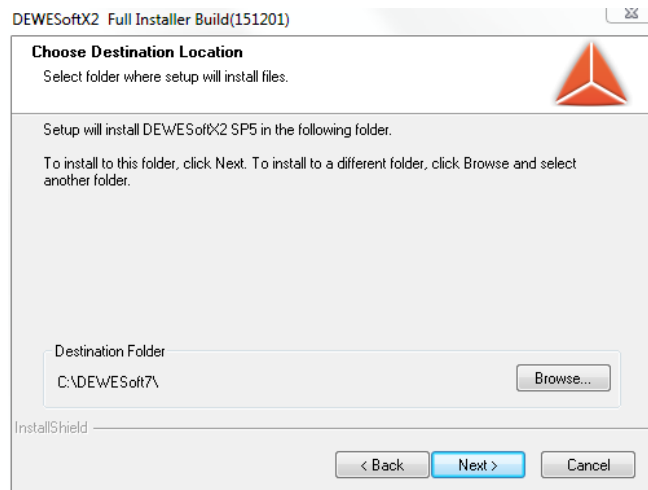


7. If your computer has Ulyssix hardware installed, then select “DeweSoft Measurement Unit” in the selection window. If the computer does not have Ulyssix hardware installed and will be used to as a View Client, then select “Windows Standard.” Click “Next” to continue.



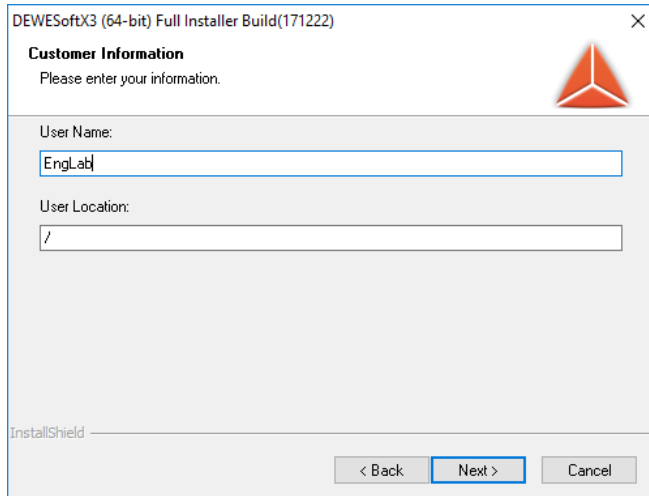
8. In the Choose Destination Location window, either use the default Destination Folder or click “Browse” to select a new Destination folder. . Please make note of your install directory. It will be needed to perform the DeweSoft Upgrades. Click “Next” to proceed. There are several things to consider when choosing a folder.

- a. If DeweSoft 7 or DeweSoft X2 is installed on your computer, then the location should be the same as your previous DeweSoft folder. This will allow the new version of DeweSoft to access your existing license.
- b. Depending on the IT privileges allocated to your Window 10 log in account, you might not have Write Privileges to files in C:\. Please consult your IT Administrator.



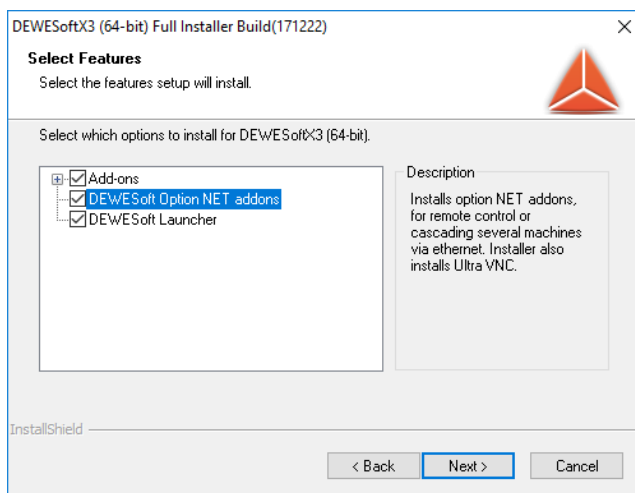
c.

9. In the “Customer Information” window enter the User Name and User location if desired. Click “Next” to continue.

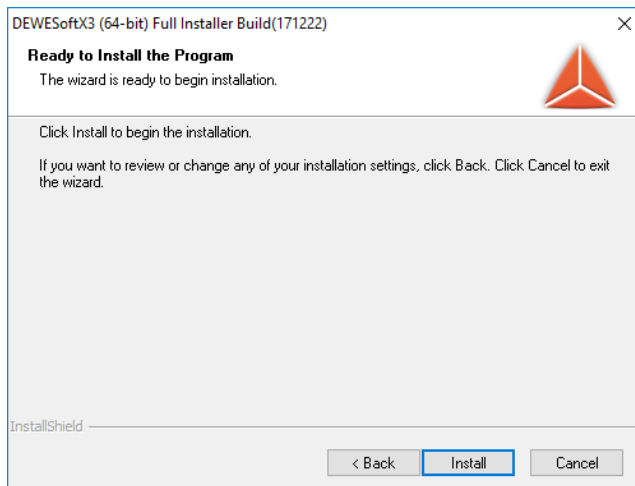


10. In the “Select Features” window:

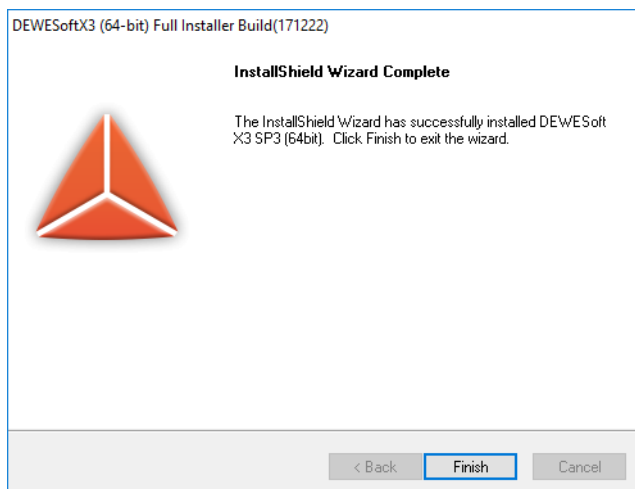
- a. Check only the box for the Add-ons.
- b. If you purchased the DeweSoft NET Networking option then also check the boxes for the, DeweSoft Option NET addons and the DeweSoft Launcher.
- c. Click “Next” to continue



11. The installer is now ready to start the installation process. Click the “Install” button to start.



12. If the installer asks “Old DeweSoft settings were found. Do you want to use them?” Click Yes.
13. The installer will begin. There will be many windows that flash on the screen and some that install various components of DeweSoft. This is normal.
14. The installer will ask if you want to DeweSoft to be added to the firewall.
 - a. If you purchased the DeweSoft NET Networking option then click Yes.
 - b. If you purchased the Chapter 10 plugin and plan on sending Ch10 data via UDP then click Yes.
 - c. Otherwise, click No.
15. After a period of time, the installation will finish. Select the “Yes, I want to restart my computer now” radio button and click “Finish” to complete the installation and restart your computer.



16. When your computer is done restarting, launch DeweSoft X3. DeweSoft will need a license.
 - a. If this computer has not had DeweSoft installed before, a new license is needed. Please contact Ulyssix for support

- b. If a DeweSoft exists on this computer, please go to “DeweSoft X3 Import License and Register Plug-Ins.”

DeweSoft X3 and Addons Upgrade

1. Acquire the DeweSoft X3 Upgrade files if you do not already have them. Be sure to use the same DeweSoft X3 Upgrade version as the installed version of DeweSoft (either 32-bit or 64-bit).

a. Using the website:

- i. The DeweSoft X3 Upgrade can be downloaded from the Ulyssix website at <http://www.ulyssix.com/#!software/cv43>.



- ii. Navigate to the “DeweSoft Software Suite” section and click the “DeweSoft X3 Updates” link. This will download the file “DS_Upgrade_X3.zip.”

DEWESoft Software Suite

User friendly software package with real time displays and playback analysis. DEWESoft allows for multiple asynchronous embedded formats, tagged parameters, frame format identifiers and much more.

All Ulyssix telemetry cards are now running in DEWESoft X3 SP3 32-bit and 64-bit:

Download New Installs or Updates ver. Tarsus.dll 11.0.13, pcm_hw.dll 17.14, Chapter10 ver 6.0.1:

[DEWESoft X3 64-bit SP3 Full Install](#) | [DEWESoft X3 64-bit SP3 Updates](#)

Download New Installs or Updates ver. Tarsus.dll 11.0.13, pcm_hw.dll 18.4, Chapter10 ver 6.0.1:

[DEWESoft X3 32-bit SP3 Full Install](#) | [DEWESoft X3 32-bit SP3 Updates](#)

Legacy DEWESoft X2 SP10:

Download New Installs or Updates ver. Tarsus.dll 11.0.13, pcm_hw.dll 18.4, Chapter10 ver 6.0.1:

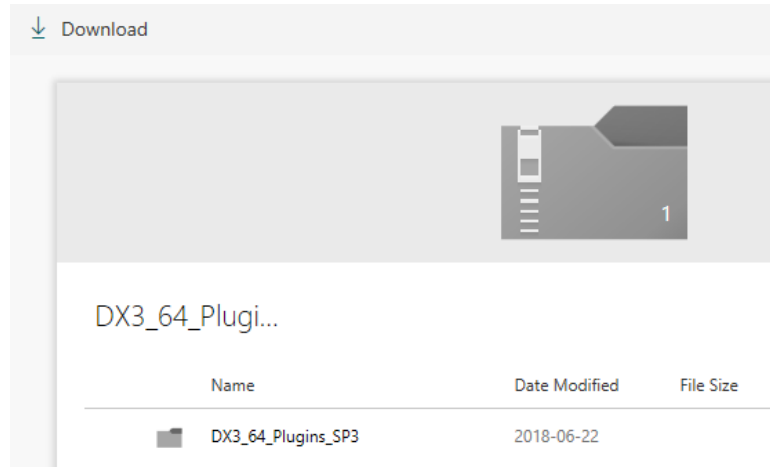
[DEWESoft X2 SP10 Full Install](#) | [DEWESoft X2 SP10 Updates](#)

Driver B Release 02-27-2015

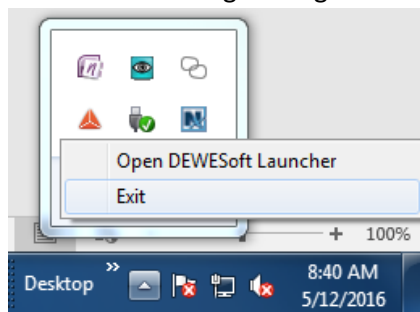
[Win10 64-bit Driver](#) | [Win7 64-bit Driver](#) | [Win7 32-bit Driver](#) | [WinXP Driver](#)

- iii. After you click on the link, it will navigate your browser to the following page. Click the Download button in the upper left corner.

Ulyssix Driver, Firmware, and DeweSoft X3 Installation and Upgrade Manual
Ulyssix Technologies, Inc.

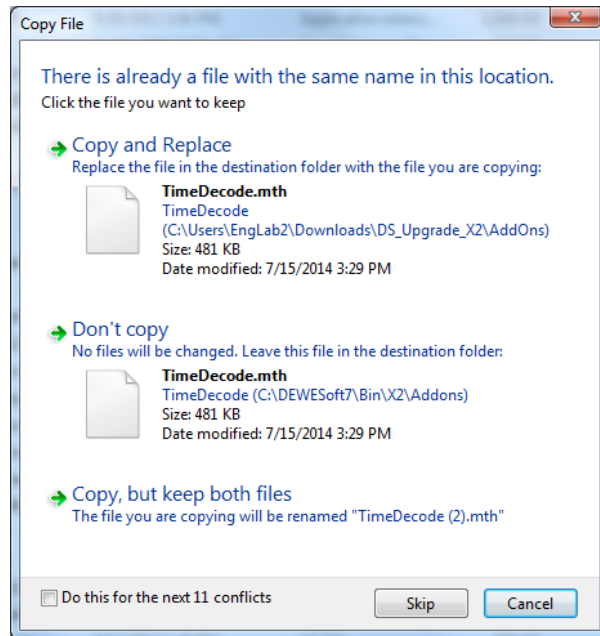


- iv. Unzip "DS_Upgrade_X3.zip." The file contains three folders and a ReadMe.txt file.
- b. Using the Ulyssix Software CD:
 - i. Insert the Software CD into the CDROM.
 - ii. Open the folder "DeweSoft X3"
 - iii. The needed files are located inside the DS_Upgrade_X3.
2. Before copying any file, exit the DeweSoft Launcher from the task bar (if it is running).
 - a. Before copying and pasting the files, the DeweSoft X3 Launcher must be turned off. If the DeweSoft X3 Launcher is left running, Windows will encounter a "Folder in Use" error and will not copy all of the files.
 - b. To exit the DeweSoft X3 Launcher in Windows 7, look for the up arrow near the clock in the tool bar. Click the up arrow to display a pop up menu. In the pop up menu, look for the DeweSoft X3 orange triangle icon. Right click on the orange triangle and select "Exit."



3. The unzipped folder will contain two or three folders:
 - a. Addons – this folder contains the DeweSoft plugins for the Ulyssix hardware as well as updated versions of other DeweSoft plugins
 - b. Manual – this folder contains DeweSoft and Ulyssix documentation.
 - c. X3 – this folder is not always included. It contains updated files for DeweSoft if a minor upgrade has occurred since the last release of an installer.

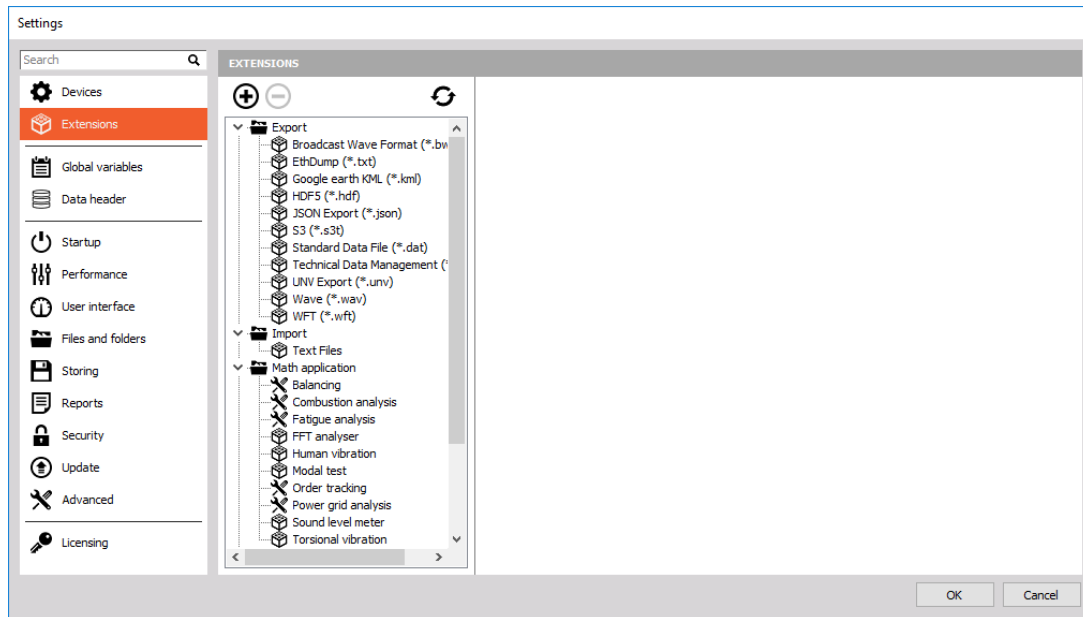
4. Copy the all of the contents of the “AddOns” folder from the DS_Upgrade_X3 folder to your DeweSoft X3 Addons folder directory. This must be done via Copy and Paste. Drag and Drop will not work.
 - a. For DeweSoft X3 32-bit, this directory is typically either “C:\DEWESoft\Bin\X3\Addons” or “D:\DEWESoft\Bin\X3\Addons.”
 - b. For DeweSoft X3 64-bit, this directory is typically either “C:\DEWESoft\Bin64\X3\Addons64” or “D:\DEWESoft\Bin64\X3\Addons64.”
 - c. If Windows prompts you that the file already exists, check the box for “Do this for the next conflicts”, and then click “Copy and Replace.”



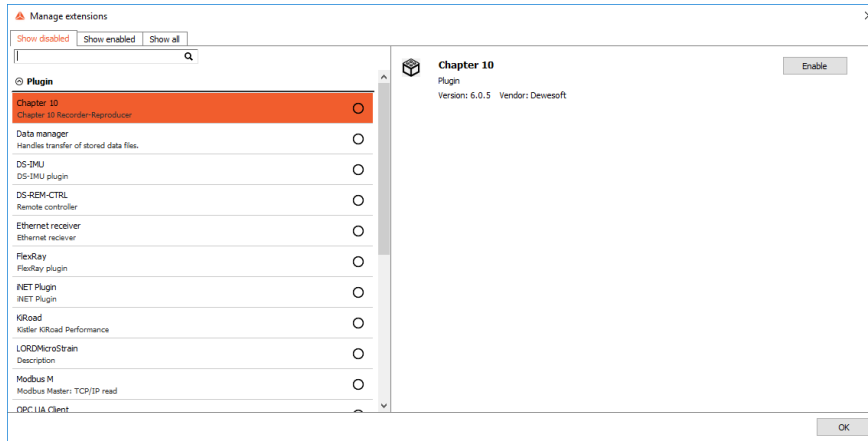
- d.
5. Copy the contents of the “Manual” folder from your DS_Upgrade_X3 folder to your DeweSoft X3 Manual folder directory. This must be done via Copy and Paste. Drag and Drop will not work.
 - a. For DeweSoft X3 32-bit, this directory is typically either “C:\DEWESoft\Bin\X3\Manual” or “D:\DEWESoft\Bin\X3\Manual.”
 - b. For DeweSoft X3 64-bit, this directory is typically either “C:\DEWESoft\Bin64\X3\Manual” or “D:\DEWESoft\Bin64\X3\Manual.”
 - c. As mentioned above, when the “Copy File” dialog box appears check the “Do this for the next conflicts” and then click “Copy and Replace.”
6. Copy the contents of the “X3” folder from your DS_Upgrade_X3 to your DeweSoft X3 folder. This must be done via Copy and Paste. Drag and Drop will not work.
 - a. For DeweSoft X3 32-bit, this directory is typically either “C:\DEWESoft\Bin\X3\” or “D:\DEWESoft\Bin\X3\.”
 - b. For DeweSoft X3 64-bit, this directory is typically either “C:\DEWESoft\Bin64\X3\” or “D:\DEWESoft\Bin64\X3\.”
 - c. As mentioned above, when the “Copy File” dialog box appears check the “Do this for the next conflicts” and then click “Copy and Replace.”

DeweSoft X3 Register Plug-Ins and Import License

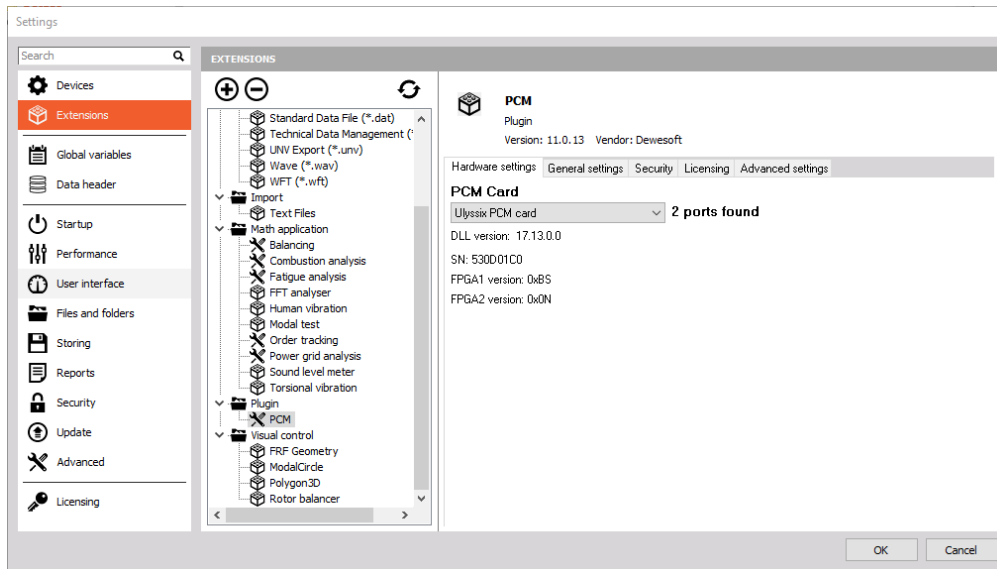
1. In the upper right hand of DeweSoft X3, click the “Options” button and then select “Settings” from the menu. The Settings window will launch.
2. To Register Plug-ins, select “Extensions,” on the left side of the Settings window, to display the Extension properties.



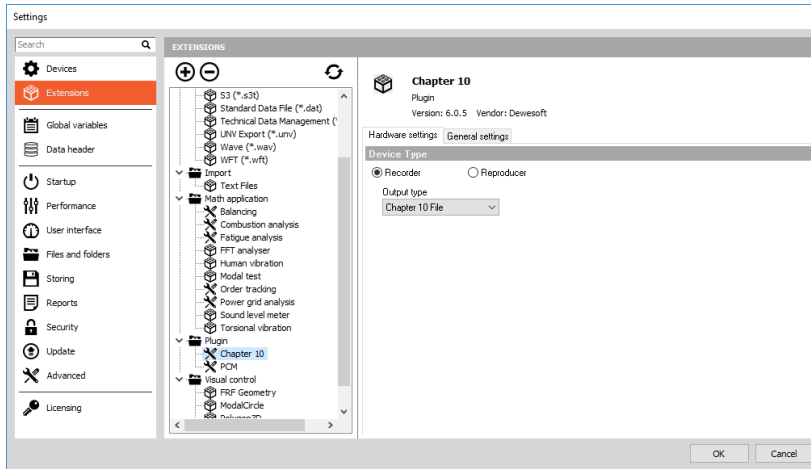
3. Click the plus sign at the top of the Extensions properties to launch the Manage Extensions window. In the Manage Extensions select the desired Plug-Ins by clicking on the circle to the right of the Plug-In. After you click the circle, a check mark will appear inside of the circle. Below is a list of typical Plug-Ins.
 - a. Astro-Med
 - b. Chapter 10
 - c. PCM
 - d. RF Receiver
 - e. Syrinx Turbo
4. Also select any additional Plug-Ins that you desire and click “OK” in the bottom right hand corner of the window.



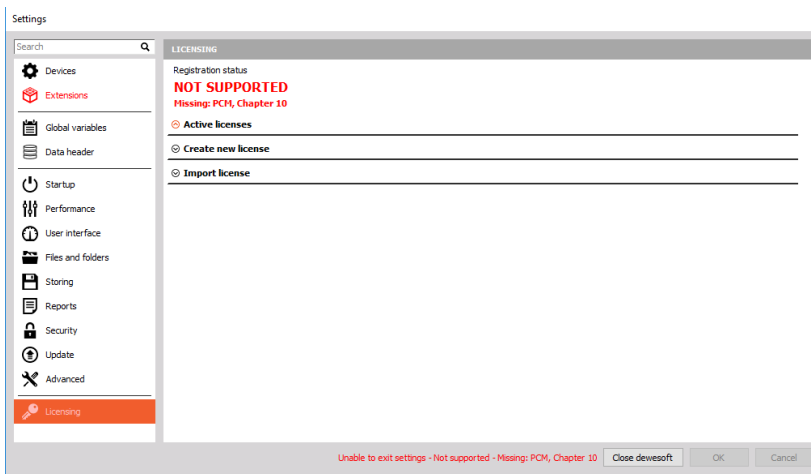
5. In the Settings window, select “Extensions” on the upper left had corner. In the list of Extensions, select PCM from the Plug-in folder. In the combo box under “PCM Card” select “Ulyssix PCM Card.” Under the combo box information about the DLL Version, Ulyssix Card Serial Number, and FPGA Versions numbers will appear.



6. If a window saying “Only one clock provider must be assigned,” please complete the following steps:
 - a. Click “OK” on the pop up window.
 - b. Select Chapter 10 from the Plug-Ins list.
 - c. In the Chapter 10 Settings window, select the radio button next Recorder. DeweSoft can only have a single time source and the Ulyssix PCM card and the Ch10 Reproducer are both considered time sources.



7. To Import a License, select “Licensing,” on the left side of the Settings window, to display the License Properties in the right side of the Settings window.



8. Click the down arrow next to “Import License” to expand the Import License details. Click “Import offline license...” to begin the license import process. This will launch a file dialog box. In the file dialog box, navigate to the location of DeweSoft license file. The file extension of the DeweSoft license file is “.lic” The DeweSoft license file is typically located one of the following directories:

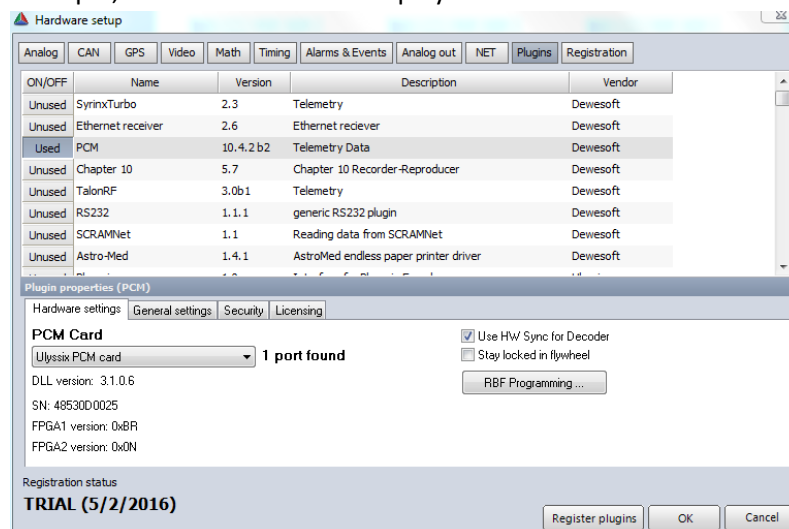
- a. C:\DEWESoft7\System\V7_1
- b. D:\DEWESoft7\System\V7_1
- c. C:\DEWESoftX2\System\X2
- d. D:\DEWESoftX2\System\X2

9. DeweSoft X3 Installation is complete. Please proceed to the “Upgrade DeweSoft X3 and Addons” section to get the latest upgrades and Plug-Ins.

Ulyssix Firmware Upgrade

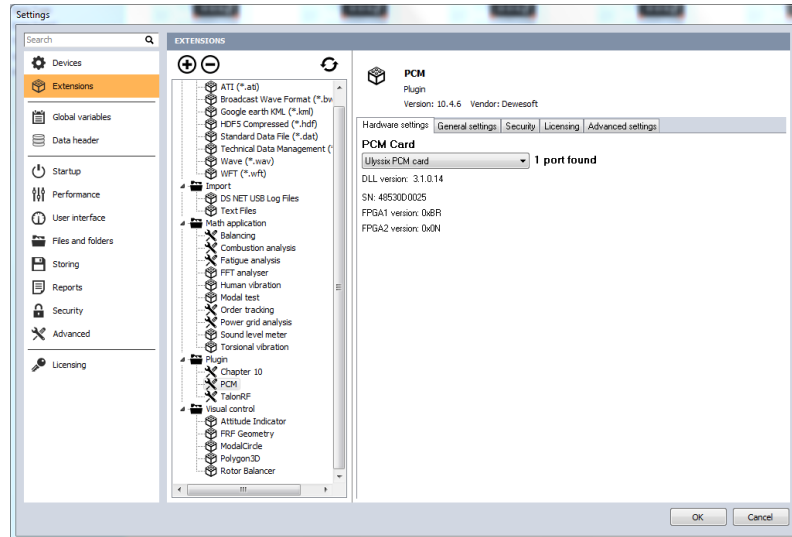
1. Ulyssix hardware use two different firmware file extensions.
 - a. The following cards use RBF files:
 - i. TarsusHS
 - ii. TalonRF
 - iii. SyrinxTurbo
 - iv. TarsusPCM
 - b. The follow cards use RPD files:
 - i. Bald Eagle
2. Determine the Version Number of the Ulyssix cards in your computer and determine if the RBF files need upgrading.
 - a. Launch either DeweSoft 7 or DeweSoft X3.
 - b. DeweSoft 7

- i. In the upper right hand corner click “Settings” and then select “Hardware Setup” from the menu.
- ii. In the Hardware Setup window select PCM. The PCM Plug-In Properties appears at the bottom of the window.
- iii. FPGA1 and FPGA Versions are listed in the bottom left corner. Each FPGA Version consists of up to two alphabet characters. Please note that if the FPGA Version is only one alphabet character than a leading zero is added. For example, Version A would be displayed as “0x0A.”



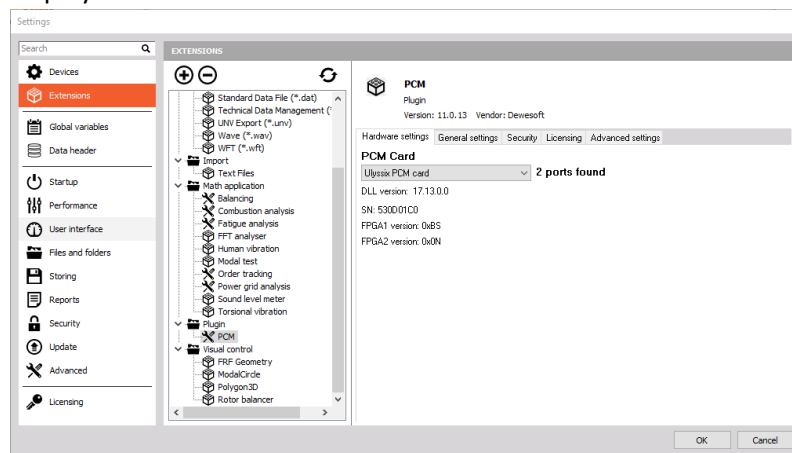
- c. DeweSoft X2
 - i. In the upper right hand corner click “Settings” and then select “Settings” from the menu.
 - ii. In the Settings Window, select “Extensions” from the menu on the left side. Scroll down the list of Extensions until you see the section “Plug-In.” Select “PCM” under the Plug-In heading and the PCM Plug-In Properties appear to the right.

- iii. Select “Ulyssix PCM Card” from the drop down box. FPGA1 and FPGA2 Versions are listed in the bottom left corner. Each FPGA Version consists of up to two alphabet characters. Please note that if the FPGA Version is only one alphabet character than a leading zero is added. For example, Version A would be displayed as “0x0A.”



d. DeweSoft X3

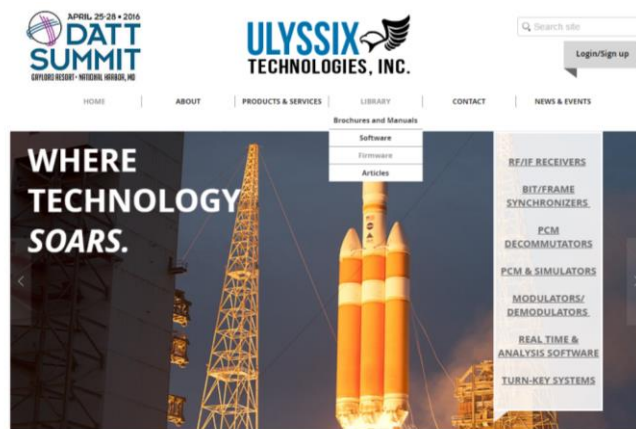
- i. In the upper right hand corner click “Options” and then select “Settings” from the menu.
- ii. In the Settings Window, select “Extensions” from the menu on the left side. Scroll down the list of Extensions until you see the section “Plug-In.” Select “PCM” under the Plug-In heading and the PCM Plug-In Properties appear to the right.
- iii. Select “Ulyssix PCM Card” from the drop down box. FPGA1 and FPGA2 Versions are listed in the bottom left corner. Each FPGA Version consists of up to two alphabet characters. Please note that if the FPGA Version is only one alphabet character than a leading zero is added. For example, Version A would be displayed as “0x0A.”



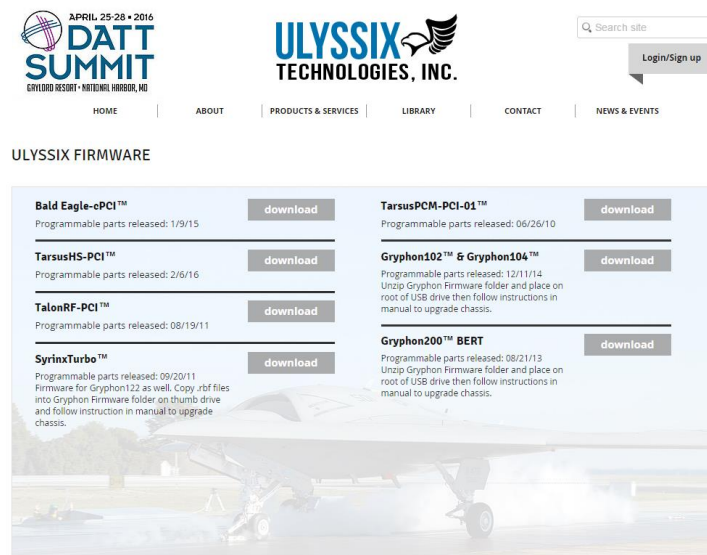
3. Compare the FPGA Versions for the Ulyssix Hardware to the FPGA Versions for the new RBF files.

a. Using the website:

- i. The Ulyssix Firmware upgrade can be downloaded from the Ulyssix website at <http://www.ulyssix.com/#!firmware/cevc>.



- ii. On the Firmware page, click the download button next to your hardware. The release date for the firmware is listed below the hardware name.

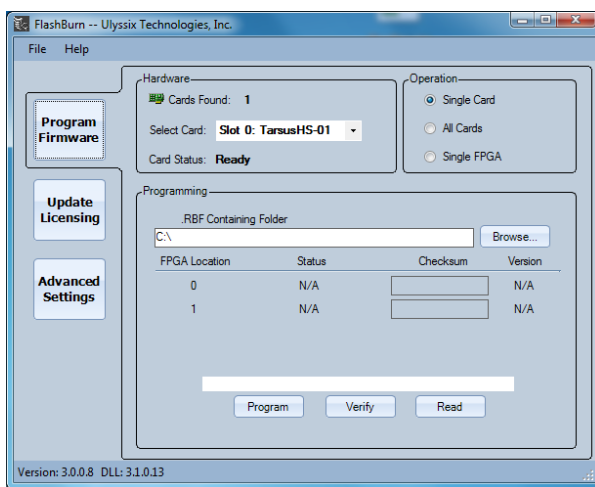


- iii. After the download of your zip file completes, unzip the file. Inside of the folder there will be two firmware files (either RBF or RPD) and a ReadMe.txt.

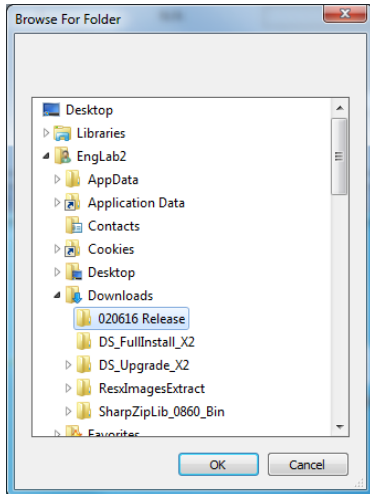
b. From Ulyssix Software CD

- i. Insert the Software CD into the CDROM.

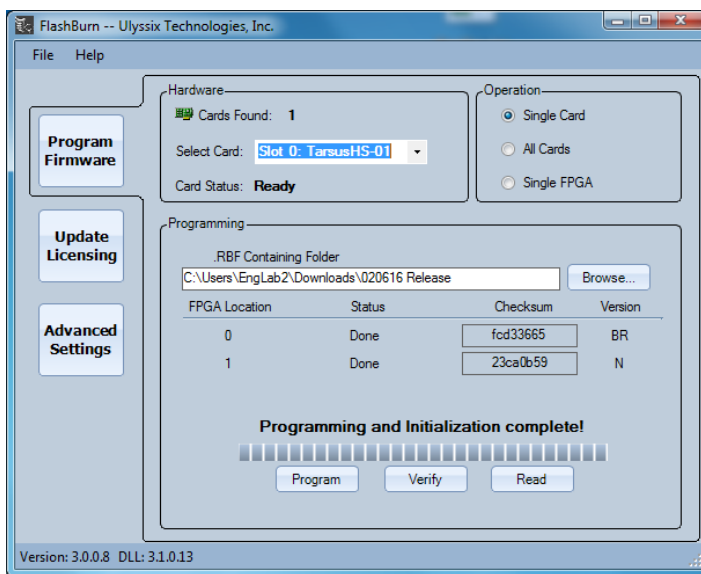
- ii. Open the “TarsusPCM” folder there are folders for the TarsusHS RBF and BaldEagle RPD files. Copy the desired folder to your computer. FlashBurn cannot load files from read-only media like a CDROM.
 - iii. Inside of each folder there are two firmware files (either RBF or RPD) and a ReadMe.txt.
- c. Open the ReadMe.txt. The top line contains the FPGA1 Version. The second line contains the FPGA2 Version. Compare these versions to the FPGA Versions from DeweSoft. If the FPGA Versions in the ReadMe.txt is newer, proceed to Step 4, otherwise the FPGAs do not need to be upgraded and no further action is needed.
4. Launch the FlashBurn application. FlashBurn is used to update the firmware on the FPGAs on the Ulyssix hardware.



5. Click the “Program Firmware” button on the left side of FlashBurn. This will display the programming controls. There are three sections of controls:
 - a. Hardware (top left)
 - b. Operation (top right)
 - c. Programming (bottom)
6. In the Hardware section, choose the Ulyssix card to program in the “Select Card” combo box. This combo box lists all of the Ulyssix cards in the system. They are in order by the Ulyssix card’s slot number.
7. In the Operation section, select the radio button for “Single Card.”
8. In the Programming section, click the “Browse” button. This will launch a Directory Dialog box. Navigate to the directory where your firmware folder is located (from step 3). Select the folder with the firmware files and then click “OK.” The selected directory will appear in the text box to the left of the Browse button.



9. In the Programming section, click the “Program” button to begin programming the FPGA. FlashBurn starts by erasing FPGA Location 0. When the erase is complete, FlashBurn will program FPGA Location 0. FlashBurn repeats this process on FPGA Location 1. FlashBurn displays a notification message “Programming and Initialization complete!”



10. In the Programming section, the CheckSum and FPGA Version are displayed for FPGA Location 0 and FPGA Location 1. This should match the values in the ReadMe.txt.
11. For the rest of the Ulyssix card in the computer, change the Select Card combo box in the Hardware section and repeat 9. Please note that each firmware folder is unique for each Ulyssix Hardware type. For example, a TalonRF card should not be programmed with firmware for a TarsusHS.
12. Once all of the Ulyssix hardware has been programmed, the Ulyssix Firmware Update is complete.